

Astaro Command Center



Service providers and companies that have multiple Astaro installations in various locations use the Astaro Command Center to centrally manage up to several hundred Astaro appliances. The Web-based user interface provides optimal transparency in implementing company-wide security guidelines. The administrator always has an overview of important system parameters and can respond quickly through the central configuration option when critical values are indicated.

Astaro Command Center V1 is available free of charge with extensive functionality:

- ▶ **Device Monitoring:** Monitors license status, threats, firmware / pattern versions, resource utilization, running services, network load, HA- / cluster -status, as well as other system parameters in real time with an intelligent trend indicator.
- ▶ **Central Configuration:** Complete control of Up2Dates, as well as a central access option via single sign-on to all connected devices.
- ▶ **Multi-Client Access:** User-specific views and access rights allow service providers to manage multiple client networks on a single ACC device.

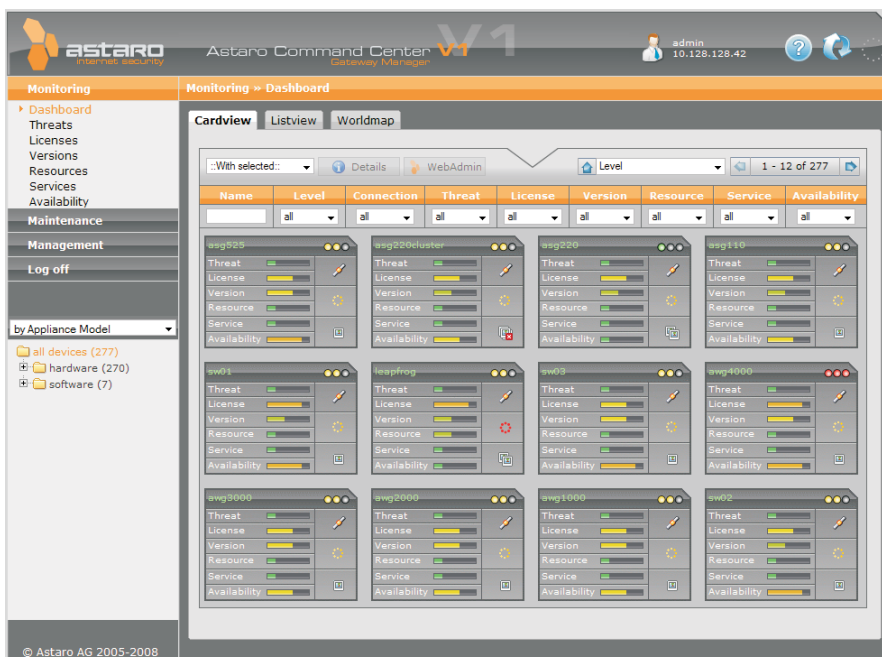
Benefits

Comprehensive Security

- ▶ Central threat-level monitoring
- ▶ Real-time firmware status check
- ▶ Central pattern and software update of multiple Astaro Gateway appliances
- ▶ Granular restriction of user-rights through role-based administration

Easy to manage

- ▶ Web-based (without Java or Flash)
- ▶ Integration into existing AD & eDir, LDAP, RADIUS, TACACS environments
- ▶ 'Zero-Config' registration for Astaro Gateway appliances
- ▶ Comprehensive dashboards graphically illustrate the network security status of all selected devices
- ▶ The world map enables the quick location of specific devices within globally distributed networks with status reports
- ▶ Detailed views for specific categories, e.g. Threats, System-Load
- ▶ Single sign-on allows rapid access to Astaro Gateway appliances
- ▶ Simple integration for existing environments



The Astaro difference

- ▶ Only Astaro keeps central management simple. The entire user interface is web-based. No software installation or Java / Flash extensions on the clients are needed! This makes integration into existing infrastructures plug and play.
- ▶ Nobody is faster: With the "Astaro Quickstart", every Gateway connection is accomplished in no time at all.

Deployment

Astaro Command Center is available as a software or virtual appliance, so you can freely choose your preferred deployment type:

- ▶ **Astaro Software Appliance:** Turns any PC into a security appliance within minutes, offering maximum deployment flexibility.

- ▶ **Astaro Virtual Appliance:** Ready-to-go virtual machines for VMware environments, helping you to consolidate your IT infrastructure. Automatic firmware updates are provided free of charge via Astaro's Up2date service.



Technical Specifications

Monitored device information include:

- ▶ Threat-level
 - ▶ Packet filter violations
 - ▶ Detected virus-attacks
 - ▶ Detected intrusion attempts
 - ▶ Portscans
 - ▶ Failed Logins
- ▶ License
 - ▶ Active/max users
 - ▶ Active/max connections
 - ▶ License status
 - ▶ Subscriptions
- ▶ System and pattern updates
 - ▶ Up2Date packages
 - ▶ Virus Pattern updates
 - ▶ IPS Pattern updates
- ▶ Hardware resource
 - ▶ CPU load
 - ▶ Memory usage
 - ▶ Network load
 - ▶ Available disk space
 - ▶ HA- / Cluster monitor
- ▶ Multi Client capable

- ▶ Multi Client capable
- ▶ Real-time inventory management of CPU, hard disk, memory, etc.
- ▶ Tree-, list- and dashboard views provide real time information
- ▶ Interactive world map allows automatic location detection of connected devices
- ▶ Trend indicators allow to forecast parameter changes
- ▶ Automatic updates
- ▶ Intuitive web-based interface uses the latest AJAX technology
- ▶ Up2Date cache for easy redistribution of updates

System Requirements:

- ▶ Astaro Command Center can be installed on any dedicated PC* meeting the following minimal requirements:
 - ▶ Intel Pentrium 4 (2.4 GHz)
 - ▶ 512 MB RAM
 - ▶ 30 GB hard disk drive
- ▶ For support of 200+ devices, Astaro Command Center requires:
 - ▶ Intel Quad Processor 2.3 GHz
 - ▶ 3 GB RAM
 - ▶ 160 GB hard disk drive

*See Hardware Compatibility List (HCL) at:
www.astaro.com/lists/HCL-ACC-V1.txt

Contact Astaro

Download an evaluation copy of the Astaro Command Center software at <http://www.astaro.com/download> or contact Astaro at:

Europe, Middle East, Africa

Astaro AG
 Amalienbadstrasse 36
 76227 Karlsruhe
 Germany
 T: +49 721 255 16 0
 F: +49 721 255 16 200
 emea@astaro.com

The Americas

Astaro Corporation
 3 New England Executive Park
 Burlington, MA 01803
 USA
 T: +1 781 345 5000
 F: +1 781 345 5100
 americas@astaro.com

Asia Pacific Region

Astaro K.K.
 12/F Ark Mori Building
 1-12-32 Akasaka Minato-ku
 Tokyo 107-6012, Japan
 T: +81 3 4360 8350
 apac@astaro.com



www.astaro.com

Your Astaro Solutions Partner